



COMMONWEALTH OF KENTUCKY
TRANSPORTATION CABINET

www.transportation.ky.gov/

Andy Beshear
GOVERNOR

Jim Gray
SECRETARY

September 21, 2021

CALL NO. 101
CONTRACT ID NO. 214214
ADDENDUM # 1

Subject: Franklin County, NHPP 1601(008)
Letting September 24, 2021

- (1) Revised - Special Note - Page 112 of 261
- (2) Revised - Traffic Signal Estimate of Quantities - Page 201 of 261
- (3) Revised - Traffic Signal Plan Sheets - Pages 205-206 of 261
- (4) Revised - Proposal Bid Items - Pages 258-261 of 261

Proposal revisions are available at <http://transportation.ky.gov/Construction-Procurement/>.

If you have any questions, please contact us at 502-564-3500.

Sincerely,

Rachel Mills,

A handwritten signature in cursive script that reads "Rachel Mills".

Rachel Mills, P.E.
Director
Division of Construction Procurement

RM:mr
Enclosures

Jeff Wolfe - Director
Phone (502) 564-3020
FAX (502) 564-7759

DIVISION OF TRAFFIC OPERATIONS

**PROJECT MATERIALS RELEASE FORM
FOR SIGNAL AND LIGHTING**

Note: Email form with signatures to KYTC's warehouse (kim.stamper@ky.gov) at least two (2) days prior to arrival for pickup. Ensure Contractor's delivery driver has a copy of form with signatures. Failure to do either may result in long delays or refusal to distribute materials upon arrival.

Item Number: 5-187.00

County: FRANKLIN

Description: 2 TRAFFIC SIGNALS US 60 @ I-64 RAMPS

Cabinets		
Master code		
2	T-01-0020	Base Mounted 332 Cabinet
2	T-01-0105	ATC Controller
2	T-01-0106	1C w/Maxtime (this should go with item ATC controller)
2	T-01-0501	Conflict Monitor, Model 2018
2	T-01-0510	Isolator, Model 242 (1 for 2070, plus for ped detector and railroad)
10	T-01-0700	Load Switches

Signals		
18	T-02-0009	Siemens 3 Section Signal
18	T-02-0032	Siemen 3 section backplate
4	T-02-0300	LED Module 12" red arrow
4	T-02-0310	LED Module 12" yellow arrow
4	T-02-0320	LED Module 12" green arrow
14	T-02-0330	LED Module 12" red ball
14	T-02-0340	LED Module 12" yellow ball
14	T-02-0350	LED Module 12" green ball

Special items		
1		Radar Presense detetor type A

Poles		
3	T-04-0040	Steel Strain Pole 34 foot
3	T-04-0051	Steel Strain Pole 36 foot
1	T-04-0054	Steel Strain Pole 38 foot
1	T-04-0055	Steel Strain Pole 40 foot

REQUIRED

Electrical Contractor Name _____

Electrical Contractor Supervisor _____ Contact number for Supervisor _____

Project Engineer _____ Contact number for Project Engineer _____

Project Engineer attests that the mentioned contractor is the actual electrical contractor on this project

Signature of Project Engineer/Designee _____

3-8-2021

E-SHEET NAME: T00100SU USER: charles.weitzel DATE PLOTTED: September 20, 2021 FILE NAME: C:\P\WORK\CHARLES.WEITZEL\DIR938529\ALL SIGNAL STANDARDS.DGN

TRAFFIC SIGNAL ESTIMATE OF QUANTITIES

WB RAMP	LB RAMP	TOTAL UNITS	CODE	ITEM DESCRIPTION
1-64	1-64	100	4820	TRENCHING AND BACKFILLING
TOTAL	TOTAL	1,000	4845	CABLE-NO. 14/7C
		1,300	4886	MESSENER-15400 LB
		530	4932	INSTALL STEEL STRAIN POLE
		4	4950	REMOVE SIGNAL EQUIPMENT
		1	4953	TEMPORARY RELOCATION OF SIGNAL HEAD
		12	2088NS935	INSTALL SIGNAL-3 SECTION LED
		10	2306SN	REMOVE & REINSTALL COORDINATING UNIT
		1	23157EN	TRAFFIC SIGNAL POLE BASE
		19	2490IEC	PVC CONDUIT - 2 INCH - SCHEDULE 80
		80	2490IEC	INSTALL SIGNAL CONTROLLER-TY ATC
		1	2490IEC	INSTALL RADAR PRESENCE DETECTOR TYPE A
		2	2619EC	

THE STANDARD SPECIFICATIONS FOR ROAD AND BRIDGE CONSTRUCTION, CURRENT EDITION, AND OTHER SPECIAL NOTES AND SPECIFICATIONS WILL APPLY ON THIS PROJECT. SEE SECTION 706, 723, AND 112 FOR MEASUREMENT AND OTHER DETAILS. SEE SECTION 602 FOR SPIRAL REINFORCEMENT SPLICING.

THE CONTRACTOR SHALL MAKE AN INSPECTION OF THE PROJECT SITE PRIOR TO SUBMITTING A BID AND SHALL BE THOROUGHLY FAMILIARIZED WITH EXISTING CONDITIONS, SUBMISSIONS OF A BID WILL BE CONSIDERED AN AFFIRMATION OF THIS INSPECTION HAVING BEEN COMPLETED.

THE CONTRACTOR SHALL BE RESPONSIBLE FOR PICKING UP MATERIALS FOR INSTALL ITEMS AT KYTC'S DIVISION OF EQUIPMENT WAREHOUSE (1239 WILKINSON BOULEVARD, FRANKFORT, KY 40622). THE FOLLOWING PROCEDURES SHALL BE FOLLOWED FOR MATERIAL RELEASE. 1. ABOVE. FOR THESE PROCEDURES MAY RESULT IN LONG DELAYS OR REFUSAL TO DISTRIBUTE MATERIALS UPON ARRIVAL.

1. CONTRACTOR SHALL SECURE THE SIGNATURES OF KYTC'S PROJECT ENGINEER AND THE ELECTRICAL CONTRACTOR'S FOREMAN ON THE PROJECT MATERIALS RELEASE FORM. IF THE RELEASE FORM IS NOT IN THE PROPOSAL, CONTACT TED SWANSEGAR OR KERRY ROBERTS WITH THE DIVISION OF TRAFFIC OPERATIONS BY PHONE (5502-782-5540/502-782-5536) OR EMAIL (TED.SWANSEGAR@KYTC.GOV/KERRY.ROBERTS@KYTC.GOV).
2. CONTRACTOR SHALL CONTACT THE WAREHOUSE TO PREARRANGE PICK UP OF MATERIALS. SIGNATURES TO THE WAREHOUSE AT KIM.STAMPER@KYTC.GOV AND SHALL NOTIFY THE WAREHOUSE BY PHONE (502-782-8994/502-330-8153) OR EMAIL KIM.STAMPER@KYTC.GOV AT LEAST TWO (2) WORKING DAYS PRIOR TO ARRIVAL.
3. CONTRACTOR SHALL ALSO CONTACT THE SIGNAL SYSTEM BRANCH OF THE DIVISION OF TRAFFIC OPERATIONS BY PHONE (502-782-5543/502-782-5547) OR EMAIL (JUE.THOMPSON@KYTC.GOV/LARRY.IRISH@KYTC.GOV) AT LEAST TWO (2) WORKING DAYS PRIOR TO ARRIVAL TO FACILITATE PROGRAMMING OF ROUTERS.
4. CONTRACTOR SHALL ARRIVE AT THE KYTC'S DIVISION OF EQUIPMENT WAREHOUSE (1239 WILKINSON BOULEVARD, FRANKFORT, KY 40622) THE PREARRANGED DATE AND TIME. MATERIAL PICKUP SHOULD BE COMPLETED BY 11:00 AM. THE PROJECT FACTOR DRIVER DRIVER HAS A COPY OF THE PROJECT MATERIALS RELEASE FORM WITH THE REQUIRED SIGNATURES.

ADD SENTENCE TO SECTION 835.17. ALL WIRE SHALL HAVE WORKING ADDED TO THE OUTER JACKET THAT STATES: "PROPERTY OF KENTUCKY TRANSPORTATION CABINET 502 564 0501."

CONSTRUCTION AND MEASUREMENT NOTES THAT ARE CONTRARY TO SECTION 123
 SUBSECTION: 03.02 POLES AND BASES INSTALLATION. B)
 REVISION: REPLACE ENTIRE TABLE WITH THE FOLLOWING:

MAXIMUM SERVICE FORCES	DRILLED SHAFT DATA				VERTICAL BARS	TIERS OR SPIRAL
	DIAMETER (IN.)	DEPTH (FEET)	SOIL	ROCK		
0-9.9	36	9	6-5	6	13	4
10-19.9	36	9.5	6-5	6	13	4
20-29.9	36	10	6-5	6	13	4
30-39.9	36	10.5	6-5	6	13	4
40-49.9	36	11	6-5	6	13	4
50-59.9	36	11.5	6-5	6	13	4
60-69.9	36	12	6-5	6	13	4
70-79.9	36	12.5	6-5	6	13	4
80-89.9	36	13	6-5	6	13	4
90-99.9	36	13.5	6-5	6	13	4
100-109.9	36	14	6-5	6	13	4
110-119.9	36	14.5	6-5	6	13	4
120-129.9	36	15	6-5	6	13	4
130-139.9	36	15.5	6-5	6	13	4
140-149.9	36	16	6-5	6	13	4
150-159.9	36	16.5	6-5	6	13	4
160-169.9	36	17	6-5	6	13	4
170-179.9	36	17.5	6-5	6	13	4
180-189.9	36	18	6-5	6	13	4
190-199.9	36	18.5	6-5	6	13	4
200-209.9	36	19	6-5	6	13	4
210-219.9	36	19.5	6-5	6	13	4
220-229.9	36	20	6-5	6	13	4
230-239.9	36	20.5	6-5	6	13	4
240-249.9	36	21	6-5	6	13	4
250-259.9	36	21.5	6-5	6	13	4
260-269.9	36	22	6-5	6	13	4
270-279.9	36	22.5	6-5	6	13	4
280-289.9	36	23	6-5	6	13	4
290-299.9	36	23.5	6-5	6	13	4
300-309.9	36	24	6-5	6	13	4

SUBSECTION: 04.22 REMOVE SIGNAL EQUIPMENT. (CONSTRUCTION ONLY)
 REVISION: REPLACE THE PARAGRAPH WITH THE FOLLOWING:
 THE DEPARTMENT WILL MEASURE THE QUANTITY BY EACH. THE DEPARTMENT WILL NOT MEASURE BACKFILLING AND THE DISPOSAL OR TRANSPORTATION OF EQUIPMENT AND MATERIALS ASSOCIATED WITH THE STRUCTURAL COMPONENT OF THE SIGNAL. STEEL AND WOOD POLES FOR PAYMENT AND WILL CONSIDER THEM INCIDENTAL TO THIS ITEM OF WORK.

MATERIAL NOTES THAT ARE CONTRARY TO SECTION 835

SUBSECTION: 835.21 WARNING TAPE.
 REVISION: REPLACE FIRST SENTENCE WITH THE FOLLOWING IN 834.33:
 PROVIDE DETECTABLE TYPE TAPE THAT IS 6 INCHES WIDE AND 7.0 MILS (MINIMAL) THICK.

MEASUREMENT NOTES THAT ARE IN ADDITION TO SECTION 723

INSTALL SIGNAL CONTROLLER TYPE ATC. THE DEPARTMENT WILL MEASURE THE QUANTITY AS EACH INDIVIDUAL UNIT INSTALLED. THE DEPARTMENT WILL NOT MEASURE THE CONCRETE BASE, MOUNTING THE CABINET, CONNECTING THE SIGNAL AND DETECTORS, EXCAVATION, BACKFILLING, RESTORATION, ANY NECESSARY POLE MOUNTING HARDWARE, ELECTRICAL SERVICE, ELECTRICAL INSPECTION FEES, AND REQUIRED BUILDING FEES INVOLVING UTILITY SECONDARY/PRIMARY SERVICE FOR PAYMENT AND WILL CONSIDER THEM INCIDENTAL TO THIS ITEM OF WORK. THE DEPARTMENT WILL ALSO NOT MEASURE CONNECTING THE INDUCTION LOOP AMP/LIFTERS, PEDESTRIAN ISOLATORS, LOAD SWITCHES, MODEL 400 MODEM CARD FOR PAYMENT AND WILL CONSIDER THEM INCIDENTAL TO THIS ITEM OF WORK. THE DEPARTMENT WILL ALSO NOT MEASURE FURNISHING AND INSTALLING ELECTRICAL SERVICE CONDUITS, CONDUITS, ANCHORS, WETTER BASES, FUSED CUTOFF, FUSES, GROUND RODS, GROUND LUGS, AND GROUND WIRES FOR PAYMENT AND WILL CONSIDER THEM INCIDENTAL TO THIS ITEM OF WORK.

ORDERED BY: CM
 DATE SUBMITTED: 6/14/2021

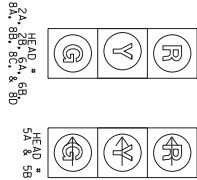
Commonwealth of Kentucky
DEPARTMENT OF HIGHWAYS
 COUNTY OF
FRANKLIN

PROJECT NUMBERS: _____

TRAFFIC SIGNAL ESTIMATE OF QUANTITIES MEASUREMENT, CONST, AND MISC NOTES

COUNT OF	ITEM NO.	SHEET NO.
FRANKLIN	5-1872.00	11

SIGNAL HEADS



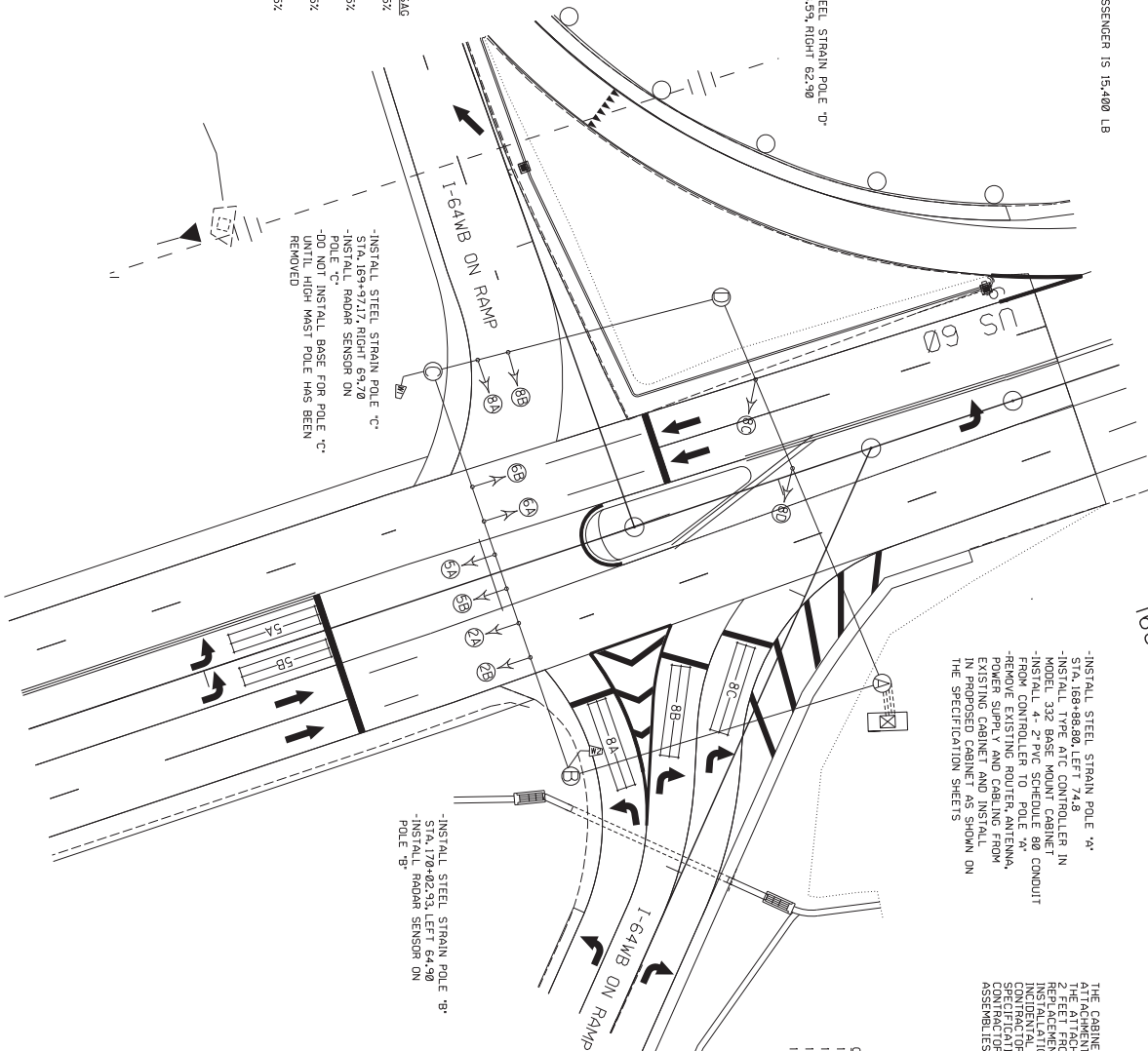
ALL INDICATIONS ARE TO BE INSTALLED ON ALL SIGNAL HEADS REFLECTIVE BACKPLATES

ALL MESSENGER IS 15,400 LB

-INSTALL STEEL STRAIN POLE 'B' STA. 168+98.59, RIGHT 62.90

POLE	HEIGHT	SPAN	ALT. HT.	CALC. SERV. MOMENT	SAB
A	36'	A-B	32'	152 KIP-FT	5%
B	36'	A-D	34'	290 KIP-FT	5%
C	38'	B-A	30.5'	305 KIP-FT	5%
D	34'	B-C	33'	32.5'	5%
		C-B	36'	163 KIP-FT	5%
		C-D	32.5'		
		D-A	32.5'		

STEEL STRAIN POLES



- INSTALL STEEL STRAIN POLE 'A' STA. 168+88.80, LEFT 74.8
- INSTALL TYPE ATC CONTROLLER IN MODEL 332 BASE MOUNT CABINET
- INSTALL 4" 2" PVC SCHEDULE 80 CONDUIT FROM POLE TO CLAMP ASSEMBLY
- REMOVE EXISTING TRAFFIC ANTENNA POWER SUPPLY AND CABLING FROM EXISTING CABINET AND INSTALL IN PROPOSED CABINET AS SHOWN ON THE SPECIFICATION SHEETS

THE CABINET SHALL SUPPLY CLAMP ASSEMBLIES FOR MESSENGER CABLE THE ATTACHED INSTALLATION FOR CLAMP ASSEMBLIES ARE TO BE 5' MIN 2 FEET FROM THE TOP OF THE POLE. THE CONTRACTOR SHALL PROVIDE THE LACKMENT CLAMP ASSEMBLIES THAT WILL ACCLIMATE TO THE LOCAL WEATHER. THE CONTRACTOR SHALL BE RESPONSIBLE FOR THE INSTALLATION OF THE STEEL STRAIN POLE. THE CONTRACTOR SHALL SUBMIT SHOP DRAWINGS OF THE REPLACEMENT ASSEMBLIES TO THE DIVISION OF TRAFFIC OPERATIONS FOR APPROVAL.

WIRING SCHEDULE

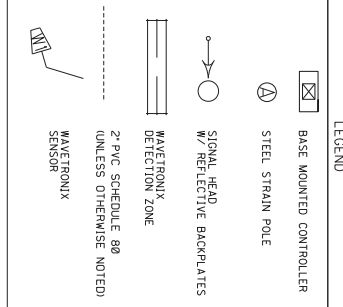
CABLE	ORIGIN	ENDING	CONNECTING
1-1/4"/7C	CONTROLLER SH 2A	SH 2A & 2B	
1-1/4"/7C	CONTROLLER SH 6B	SH 6A & 6B	
1-1/4"/7C	CONTROLLER SH 8A	SH 8A, 8B, 8C & 8D	
1-1/4"/7C	CONTROLLER SH 5A	SH 5B & 5A	

WAVEATRONIX LOOP SCHEDULE

LOOP	PHASE	SLOT	CHANNEL	SIZE	DIST. FROM STOP BAR
5A	5	J1	1	6X30	0'
5B	5	J1	2	6X30	0'
8A	8	J6	1	6X30	0'
8B	8	J6	2	6X30	0'
8C	8	J7	1	6X30	0'

SCALE 1" = 20'

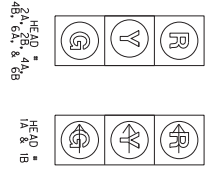
LEGEND



TRAFFIC SIGNAL PLAN SHEET
US 60 @ I-64 WB ON/OFF RAMP

COUNT OF	ITEM NO.	SHEET NO.
FRANKLIN	5-18720	15

SIGNAL HEADS



ALL INSTALLATIONS 1, 5, 0.
ALL SIGNAL HEADS
SHALL HAVE
REFLECTIVE BACKPLATES

WAVETRONIX LOOP SCHEDULE

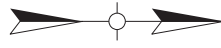
LOOP	PHASE	SLOT	CHANNEL	SIZE	DIST. FROM STATION MARK
1A	1	11	2	6X30	0'
1B	1	11	2	6X30	0'
4A	4	16	1	6X30	0'
4B	4	16	2	6X30	0'

** ROAQR DETECTION ZONE SHALL COVER MAJORITY OF LANE WIDTH

-INSTALL STEEL STRAIN POLE 'U'
-INSTALL RAOQR SENSORS ON POLE 'U'

-INSTALL STEEL STRAIN POLE 'W'
STA. 177+9.7, LEFT 56.6
-INSTALL RAOQR SENSORS ON POLE 'W'

ALL MESSENGER IS 15,400 LB



STEEL STRAIN POLES

POLE	HEIGHT	SPAN	ALL. HT.	CALC. SERV. MOMENT	SAG
A	34'	A-B	32'	177 kip-ft	5%
B	40'	B-A	32'	351 kip-ft	5%
C	36'	B-C	34'	267 kip-ft	5%
D	34'	C-D	31'	126 kip-ft	5%
		D-A	30.5'		

-INSTALL STEEL STRAIN POLE 'C'
STA. 178+17.8, RIGHT 99.5
-INSTALL TYPE ATC CONTROLLER IN MODEL 332 BASE MOUNT CABINET IN SIGNAL HEAD ASSEMBLY
-REMOVE EXISTING ROUTER ANTENNA, POWER SUPPLY AND CABLING FROM EXISTING CABINET AND INSTALL IN PROPOSED CABINET AS SHOWN ON THE SPECIFICATION SHEETS

-INSTALL STEEL STRAIN POLE 'B'
STA. 178+29.7, LEFT 87.6

THE CABINET SHALL SUPPLY CLAMP ASSEMBLIES FOR MESSENGER CABLE ATTACHMENTS BASED ON THE PRELIMINARY DESIGN OF THE POLES. IF 2 FEET FROM THE TOP OF THE POLE, THE CONTRACTOR SHALL PROVIDE REPLACEMENT CLAMP ASSEMBLIES THAT WILL FACILITATE THE INSTALLATION. CONTRACTOR SUPPLIED CLAMP ASSEMBLIES SHALL BE INSTALLED ON THE POLES. CONTRACTOR SHALL CONFIRM TO THE SPECIFICATIONS STATED ON THE POLE BASE/SIGNAL HEAD DETAILS. THE CONTRACTOR SHALL PROVIDE TRAFFIC SIGNAL HEAD DETAILS. THE ASSEMBLIES TO THE DIVISION OF TRAFFIC OPERATIONS FOR APPROVAL.

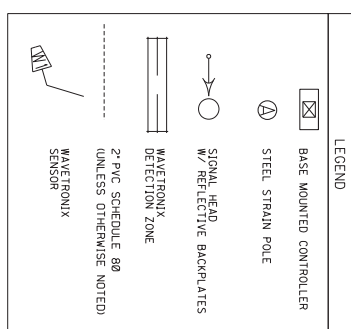
CABLE

1-#14/7C	1-#14/7C
1-#14/7C	1-#14/7C
1-#14/7C	1-#14/7C

WIRING SCHEDULE

ORIGIN	ENDING	CONNECTING
CONTROLLER	SH 2A	SH 2A & 2B
CONTROLLER	SH 6B	SH 6A & 6B
CONTROLLER	SH 4B	SH 4A & 4B
CONTROLLER	SH 1B	SH 1A & 1B

SCALE 1" = 20'



TRAFFIC SIGNAL PLAN SHEET
US 60 @ I-94 EB ON/OFF RAMP

COUNTY OF	ITEM NO.	SHEET NO.
FRANKLIN	5-18720	78

PROPOSAL BID ITEMS

214214

Page 1 of 4

Report Date 9/21/21

Section: 0001 - PAVING

LINE	BID CODE	ALT	DESCRIPTION	QUANTITY	UNIT	UNIT PRIC	FP	AMOUNT
0010	00003		CRUSHED STONE BASE	5,261.00	TON		\$	
0020	00100		ASPHALT SEAL AGGREGATE	36.20	TON		\$	
0030	00103		ASPHALT SEAL COAT	4.30	TON		\$	
0040	00194		LEVELING & WEDGING PG76-22	30.00	TON		\$	
0050	00214		CL3 ASPH BASE 1.00D PG64-22	2,340.00	TON		\$	
0060	00216		CL3 ASPH BASE 1.00D PG76-22	431.00	TON		\$	
0070	00336		CL3 ASPH SURF 0.38A PG76-22	1,241.00	TON		\$	
0080	00356		ASPHALT MATERIAL FOR TACK	10.90	TON		\$	
0090	02069		JPC PAVEMENT-10 IN	744.00	SQYD		\$	
0100	02070		JPC PAVEMENT-12 IN	416.00	SQYD		\$	
0110	02071		JPC PAVEMENT-11 IN	705.00	SQYD		\$	
0120	02676		MOBILIZATION FOR MILL & TEXT (FRANKLIN US 60 @ I-64)	1.00	LS		\$	
0130	02677		ASPHALT PAVE MILLING & TEXTURING	974.00	TON		\$	
0140	10020NS		FUEL ADJUSTMENT	8,211.00	DOLL	\$1.00	\$	\$8,211.00
0150	10030NS		ASPHALT ADJUSTMENT	15,869.00	DOLL	\$1.00	\$	\$15,869.00

Section: 0002 - ROADWAY

LINE	BID CODE	ALT	DESCRIPTION	QUANTITY	UNIT	UNIT PRIC	FP	AMOUNT
0160	01718		REMOVE INLET	1.00	EACH		\$	
0170	01875		STANDARD HEADER CURB (TYPE 2)	125.00	LF		\$	
0180	01891		ISLAND HEADER CURB TYPE 2	338.00	LF		\$	
0190	01904		REMOVE CURB	573.00	LF		\$	
0200	01917		STANDARD BARRIER MEDIAN TYPE 2	115.70	SQYD		\$	
0210	01984		DELINEATOR FOR BARRIER - WHITE	12.00	EACH		\$	
0220	02003		RELOCATE TEMP CONC BARRIER	440.00	LF		\$	
0230	02014		BARRICADE-TYPE III	14.00	EACH		\$	
0240	02159		TEMP DITCH	1,875.00	LF		\$	
0250	02160		CLEAN TEMP DITCH	938.00	LF		\$	
0260	02200		ROADWAY EXCAVATION	5,156.00	CUYD		\$	
0270	02242		WATER	53.00	MGAL		\$	
0280	02483		CHANNEL LINING CLASS II	934.00	TON		\$	
0290	02484		CHANNEL LINING CLASS III	381.00	TON		\$	
0300	02545		CLEARING AND GRUBBING (APPROX. 4.2 ACRES)	1.00	LS		\$	
0310	02585		EDGE KEY	152.70	LF		\$	
0320	02650		MAINTAIN & CONTROL TRAFFIC (FRANKLIN US 60 @ I-64)	1.00	LS		\$	
0330	02671		PORTABLE CHANGEABLE MESSAGE SIGN	6.00	EACH		\$	
0340	02696		SHOULDER RUMBLE STRIPS	5,725.00	LF		\$	
0350	02701		TEMP SILT FENCE	1,875.00	LF		\$	
0360	02703		SILT TRAP TYPE A	4.00	EACH		\$	
0370	02704		SILT TRAP TYPE B	4.00	EACH		\$	
0380	02705		SILT TRAP TYPE C	4.00	EACH		\$	
0390	02706		CLEAN SILT TRAP TYPE A	4.00	EACH		\$	

PROPOSAL BID ITEMS

214214

Page 2 of 4

Report Date 9/21/21

LINE	BID CODE	ALT	DESCRIPTION	QUANTITY	UNIT	UNIT PRIC	FP	AMOUNT
0400	02707		CLEAN SILT TRAP TYPE B	4.00	EACH		\$	
0410	02708		CLEAN SILT TRAP TYPE C	4.00	EACH		\$	
0420	02726		STAKING (FRANKLIN US 60 @ 1-64)	1.00	LS		\$	
0430	02775		ARROW PANEL	2.00	EACH		\$	
0440	02898		RELOCATE CRASH CUSHION	3.00	EACH		\$	
0450	03171		CONCRETE BARRIER WALL TYPE 9T	580.00	LF		\$	
0460	05950		EROSION CONTROL BLANKET	670.00	SQYD		\$	
0470	05952		TEMP MULCH	13,677.00	SQYD		\$	
0480	05953		TEMP SEEDING AND PROTECTION	10,258.00	SQYD		\$	
0490	05963		INITIAL FERTILIZER	.36	TON		\$	
0500	05964		MAINTENANCE FERTILIZER	.59	TON		\$	
0510	05985		SEEDING AND PROTECTION	10,970.00	SQYD		\$	
0520	05992		AGRICULTURAL LIMESTONE	7.11	TON		\$	
0530	06510		PAVE STRIPING-TEMP PAINT-4 IN	4,000.00	LF		\$	
0540	06530		PAVE STRIPING REMOVAL-4 IN	5,880.00	LF		\$	
0550	06542		PAVE STRIPING-THERMO-6 IN W	5,373.00	LF		\$	
0560	06543		PAVE STRIPING-THERMO-6 IN Y	3,692.00	LF		\$	
0570	06546		PAVE STRIPING-THERMO-12 IN W	429.00	LF		\$	
0580	06547		PAVE STRIPING-THERMO-12 IN Y	104.00	LF		\$	
0590	06556		PAVE STRIPING-DUR TY 1-6 IN W	2,348.00	LF		\$	
0600	06557		PAVE STRIPING-DUR TY 1-6 IN Y	1,576.00	LF		\$	
0610	06560		PAVE STRIPING-DUR TY 1-12 IN W	247.00	LF		\$	
0620	06568		PAVE MARKING-THERMO STOP BAR-24IN	144.00	LF		\$	
0630	06569		PAVE MARKING-THERMO CROSS-HATCH (YELLOW)	50.00	SQFT		\$	
0640	06574		PAVE MARKING-THERMO CURV ARROW	17.00	EACH		\$	
0650	06598		PAVEMENT MARKING REMOVAL	884.00	SQFT		\$	
0660	08903		CRASH CUSHION TY VI CLASS BT TL3	2.00	EACH		\$	
0670	20208NC		PAVE MARK-PAINT ARROWS	4.00	EACH		\$	
0680	20411ED		LAW ENFORCEMENT OFFICER	140.00	HOURL		\$	
0690	21554EN		EXCAVATION (SOLID ROCK)	2,113.00	CUYD		\$	
0700	22045NN		FLUME INLET TY 2-MOD	1.00	EACH		\$	
0710	22520EN		PAVE MARKING-THERMO YIELD BAR-36 IN	15.00	LF		\$	
0720	22520EN		PAVE MARKING-THERMO YIELD BAR-36 IN (TYPE 1 TAPE)	15.00	LF		\$	
0730	22664EN		WATER BLASTING EXISTING STRIPE	2,250.00	LF		\$	
0740	23253ES717		PAVE MARK TY 1 TAPE CROSS-HATCH (AND CHEVRONS)	444.00	SQFT		\$	
0750	23254ES717		PAVE MARK TY 1 TAPE DOTTED LANE EXT	58.00	LF		\$	
0760	23265ES717		PAVE MARK TY 1 TAPE STOP BAR-24 IN	45.00	LF		\$	
0770	23268ES717		PAVE MARK TY 1 TAPE-MERGE ARROW	4.00	EACH		\$	
0780	23270ES717		PAVE MARK TY 1 TAPE-CURV ARROW	14.00	EACH		\$	
0790	23607EC		PAVE MARK THERMO-LANE REDUCTION ARROW	2.00	EACH		\$	
0800	24489EC		INLAID PAVEMENT MARKER	130.00	EACH		\$	
0810	24679ED		PAVE MARK THERMO CHEVRON	48.00	SQFT		\$	
0820	24683ED		PAVE MARKING-THERMO DOTTED LANE EXTEN (WHITE)	196.75	LF		\$	

PROPOSAL BID ITEMS

214214

Page 3 of 4

Report Date 9/21/21

LINE	BID CODE	ALT	DESCRIPTION	QUANTITY	UNIT	UNIT PRIC	FP	AMOUNT
0830	24683ED		PAVE MARKING-THERMO DOTTED LANE EXTEN (YELLOW)	20.75	LF		\$	
0840	24894EC		REMOVE (PAVEMENT MARKER LENS)	6.00	EACH		\$	
0850	24969ED		LONGITUDINAL SAW CUT	3,922.00	LF		\$	

Section: 0003 - DRAINAGE

LINE	BID CODE	ALT	DESCRIPTION	QUANTITY	UNIT	UNIT PRIC	FP	AMOUNT
0860	00078		CRUSHED AGGREGATE SIZE NO 2	4.00	TON		\$	
0870	00461		CULVERT PIPE-15 IN	10.00	LF		\$	
0880	00462		CULVERT PIPE-18 IN	21.00	LF		\$	
0890	00464		CULVERT PIPE-24 IN	55.00	LF		\$	
0900	00524		STORM SEWER PIPE-24 IN	48.00	LF		\$	
0910	01001		PERFORATED PIPE-6 IN	18.00	LF		\$	
0920	01011		NON-PERFORATED PIPE-6 IN	32.00	LF		\$	
0930	01029		PERF PIPE HEADWALL TY 3-6 IN	3.00	EACH		\$	
0940	01033		PERF PIPE HEADWALL TY 4-6 IN	1.00	EACH		\$	
0950	01310		REMOVE PIPE	104.00	LF		\$	
0960	01433		SLOPED BOX OUTLET TYPE 1-18 IN	2.00	EACH		\$	
0970	01434		SLOPED BOX OUTLET TYPE 1-24 IN	4.00	EACH		\$	
0980	01487		CURB BOX INLET TYPE F	3.00	EACH		\$	
0990	01490		DROP BOX INLET TYPE 1	2.00	EACH		\$	
1000	01585		REMOVE DROP BOX INLET	2.00	EACH		\$	
1010	01705		REMOVE CURB & GUTTER BOX INLET	3.00	EACH		\$	
1020	02607		FABRIC-GEOTEXTILE CLASS 2 FOR PIPE	460.00	SQYD	\$2.00	\$	\$920.00
1030	02625		REMOVE HEADWALL	10.00	EACH		\$	

Section: 0004 - SIGNING

LINE	BID CODE	ALT	DESCRIPTION	QUANTITY	UNIT	UNIT PRIC	FP	AMOUNT
1040	02562		TEMPORARY SIGNS	575.00	SQFT		\$	
1050	06400		GMSS GALV STEEL TYPE A	3,146.00	LB		\$	
1060	06405		SBM ALUMINUM PANEL SIGNS	435.00	SQFT		\$	
1070	06406		SBM ALUM SHEET SIGNS .080 IN	163.31	SQFT		\$	
1080	06407		SBM ALUM SHEET SIGNS .125 IN	285.08	SQFT		\$	
1090	06410		STEEL POST TYPE 1	608.00	LF		\$	
1100	06441		GMSS GALV STEEL TYPE C	1,056.00	LB		\$	
1110	06490		CLASS A CONCRETE FOR SIGNS	16.56	CUYD		\$	
1120	06491		STEEL REINFORCEMENT FOR SIGNS	220.00	LB		\$	
1130	20419ND		ROADWAY CROSS SECTION	2.00	EACH		\$	
1140	21134ND		REMOVE-STORE AND REINSTALL SIGN	3.00	EACH		\$	
1150	21373ND		REMOVE SIGN	24.00	EACH		\$	
1160	21596ND		GMSS TYPE D	16.00	EACH		\$	
1170	21596ND		GMSS TYPE D (SURFACE MOUNT)	1.00	EACH		\$	
1180	24631EC		BARCODE SIGN INVENTORY	51.00	EACH		\$	

PROPOSAL BID ITEMS

214214

Page 4 of 4

Report Date 9/21/21

Section: 0005 - SIGNALIZATION

LINE	BID CODE	ALT	DESCRIPTION	QUANTITY	UNIT	UNIT PRIC	FP	AMOUNT
1190	04820		TRENCHING AND BACKFILLING	100.00	LF		\$	
1200	04845		CABLE-NO. 14/7C	2,300.00	LF		\$	
1210	04886		MESSENGER-15400 LB	1,130.00	LF		\$	
1220	04932		INSTALL STEEL STRAIN POLE	8.00	EACH		\$	
1230	04953		TEMP RELOCATION OF SIGNAL HEAD	24.00	EACH		\$	
1240	20188NS835		INSTALL LED SIGNAL-3 SECTION	18.00	EACH		\$	
1255	23068NN		REMOVE & REINSTALL COORDINATING UNIT (ADDED 9-21-2021)	2.00	EACH		\$	
1260	23157EN		TRAFFIC SIGNAL POLE BASE	38.00	CUYD		\$	
1270	24901EC		PVC CONDUIT-2 IN-SCHEDULE 80	160.00	LF		\$	
1280	24908EC		INSTALL SIGNAL CONTROLLER-TY ATC	2.00	EACH		\$	
1290	24955ED		REMOVE SIGNAL EQUIPMENT	2.00	EACH		\$	
1300	26119EC		INSTALL RADAR PRESENCE DETECTOR TYPE A	4.00	EACH		\$	

Section: 0006 - LIGHTING

LINE	BID CODE	ALT	DESCRIPTION	QUANTITY	UNIT	UNIT PRIC	FP	AMOUNT
1310	04820		TRENCHING AND BACKFILLING	70.00	LF		\$	
1320	04940		REMOVE LIGHTING	1.00	LS		\$	
1330	04942		REMOVE STORE & REINSTALL POLE	1.00	EACH		\$	
1340	23161EN		POLE BASE-HIGH MAST	10.00	CUYD		\$	
1350	24851EC		CABLE-NO. 10/3C DUCTED	70.00	LF		\$	

Section: 0007 - MOBILIZATION AND DEMOBILIZATION

LINE	BID CODE	ALT	DESCRIPTION	QUANTITY	UNIT	UNIT PRIC	FP	AMOUNT
1360	02568		MOBILIZATION	1.00	LS		\$	
1370	02569		DEMOBILIZATION	1.00	LS		\$	